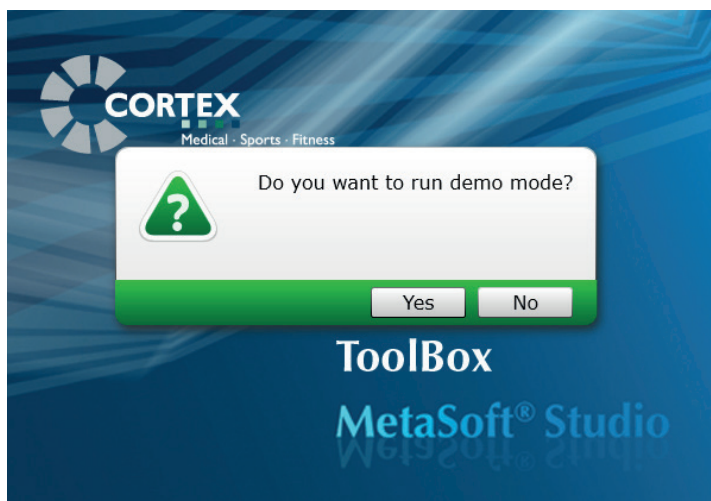


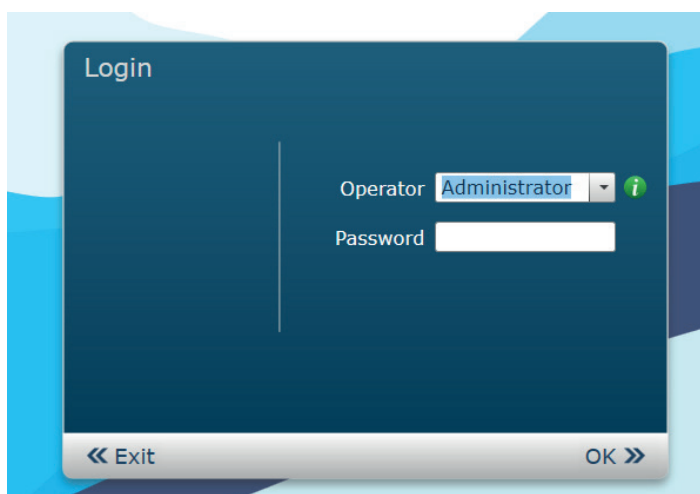
## How you can use MetaSoft®-Studio also in your home office!


In this document you will find instructions on how to set up a temporary student account in the CORTEX MetaSoft®-Studio - Demo version. This account allows you to import test data that can also be used in a home office situation. This service is limited until the end of this year (12/2020).

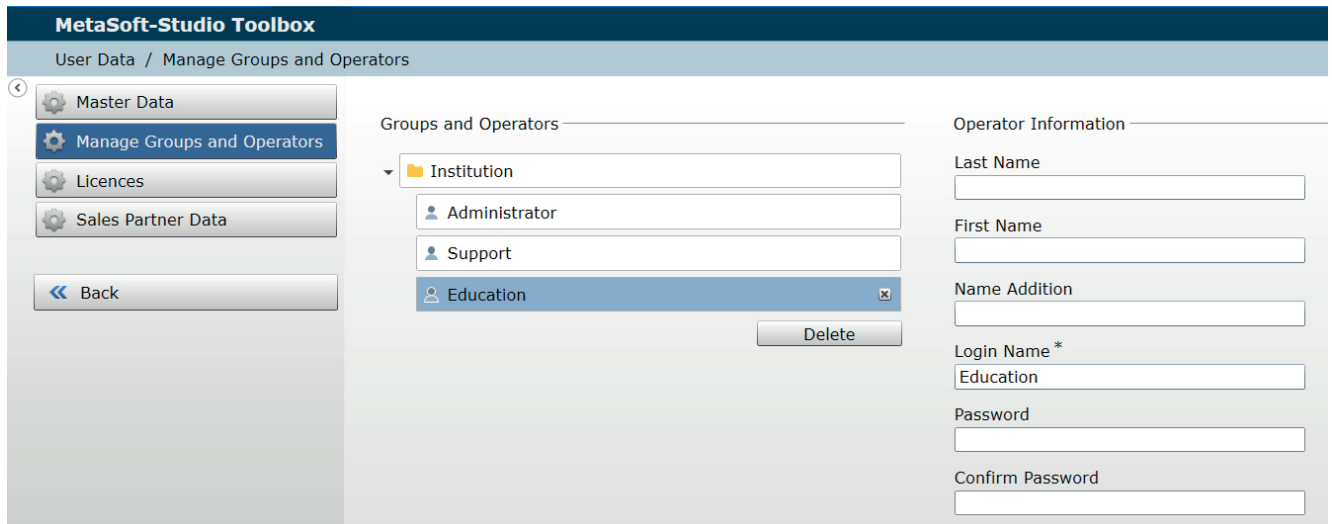
1. Install the current MetaSoft®-Studio software version 5.11 in the standard option (Single PC).
2. Open the »MSS TOOLBOX« application after the installation is complete.
3. Confirm the »DEMO MODE« in the dialog box by clicking the »YES« button.



4. Select the operator »ADMINISTRATOR« in the login window and then click »OK«.  
It is not necessary to enter a password.




5. Select »MANAGE GROUPS AND OPERATORS« under the menu item »USER DATA«.
6. Click on the button  and add an operator to the existing »INSTITUTION«.
7. Enter the name »EDUCATION« in the input field »LOGIN NAME«. It is also recommended filling in all other input fields correctly.



**MetaSoft-Studio Toolbox**  
User Data / Manage Groups and Operators

Master Data  
Manage Groups and Operators  
Licences  
Sales Partner Data  
Back

Groups and Operators

- Institution
  - Administrator
  - Support
  - Education 

Delete

Operator Information

Last Name

First Name

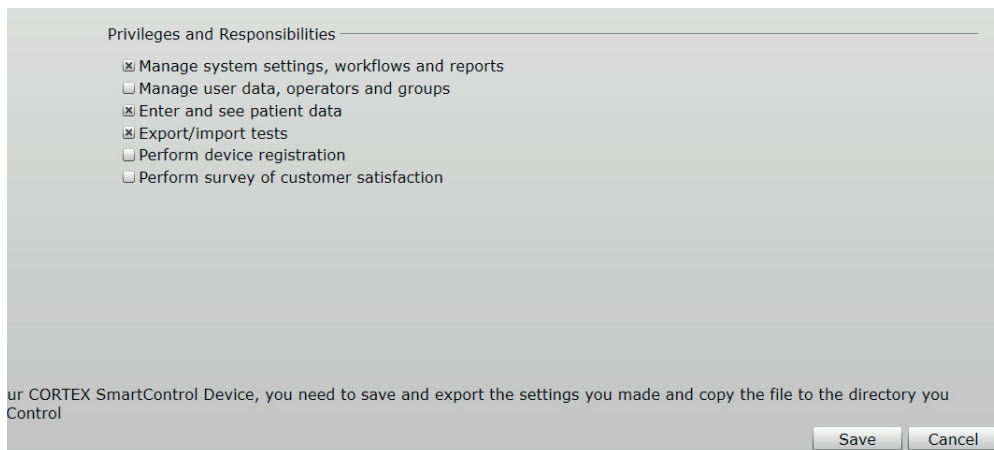
Name Addition

Login Name \*  
Education

Password

Confirm Password

8. Select the following »PRIVILEGES AND RESPONSIBILITIES« shown below.



Privileges and Responsibilities

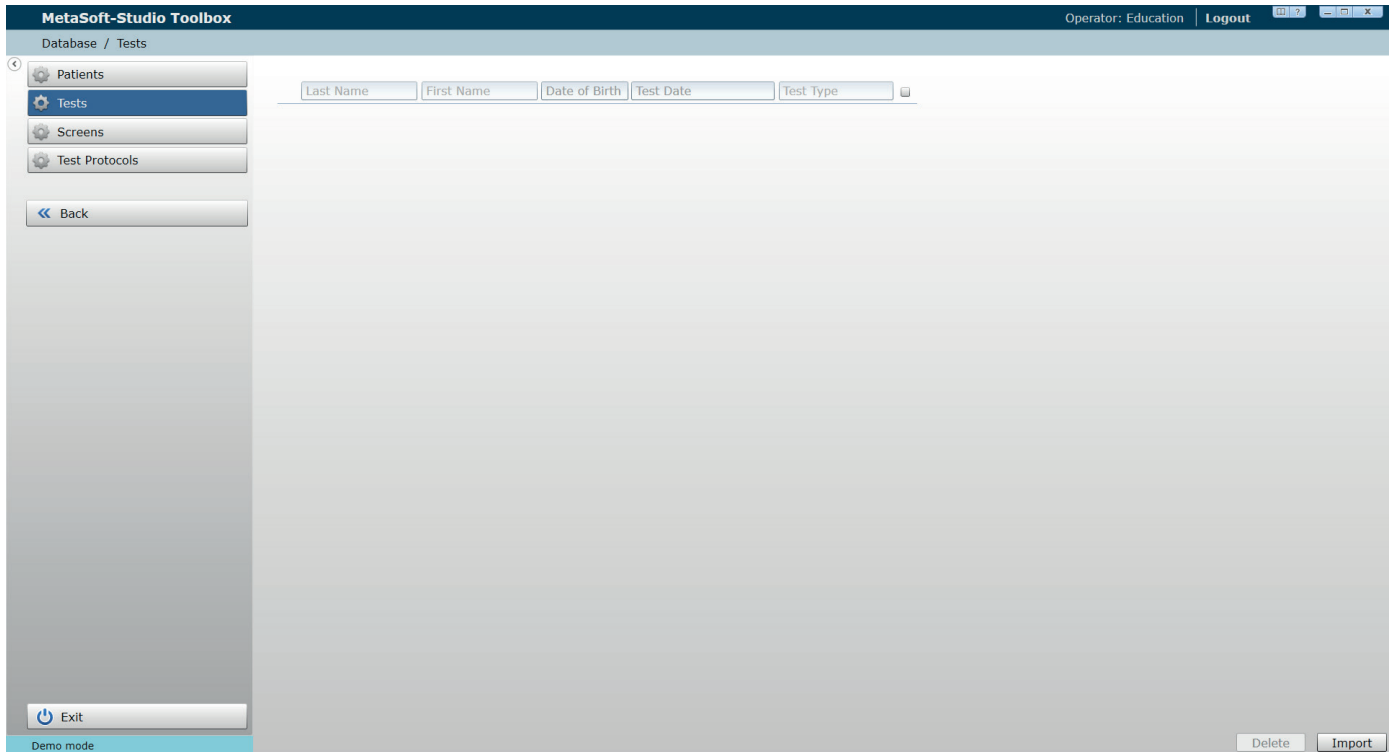
- Manage system settings, workflows and reports
- Manage user data, operators and groups
- Enter and see patient data
- Export/import tests
- Perform device registration
- Perform survey of customer satisfaction

For your CORTEX SmartControl Device, you need to save and export the settings you made and copy the file to the directory you Control

Save Cancel

9. Finally, click on the »SAVE« button and close the »MSS TOOLBOX« application.
10. Start the »MSS TOOLBOX« application again and select the operator »EDUCATION« in the login window.

11. Select the »DATABASE« item in the main menu.



12. Click on the sub-item »TESTS« and import the required test data (with the file extension \*.msstest) by using the »IMPORT« button.
13. Close the »MSS TOOLBOX« application and start »MetaSoft®-Studio«. You should now have the previously selected test data available for further processing.